

# C2 Hinge Hub Upper Replacement Instructions

## Use With Spares Kit: 01597



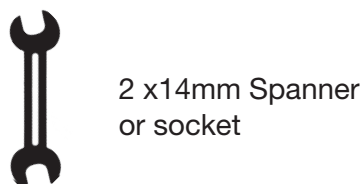
To replace the main hinge hub upper of the main lock is a simple process. We have also upgraded a few of the parts within the assembly which will also need changing to fit the new hinge hub upper. All is detailed in the step by step instructions below.

● Please ensure battery is disconnected from the trolley.

Your Kit contains:

- 1x 01168-01-02 Main Hinge Hub Upper
- 2x 01153-05-02 Main Central tube (Gun Metal)
- 1x 01164-01-02 Main Lock Button Upper
- 1x 01165-01-01 Main Hub Button Upper
- 1x 01180-01-01 Compact Main Lock Button Spring
- 1x 01169-01-02 Main Hinge Hub Lower
- 7x 00174-01-01 4x14mm Pan Pozi Screw

Tools Required:



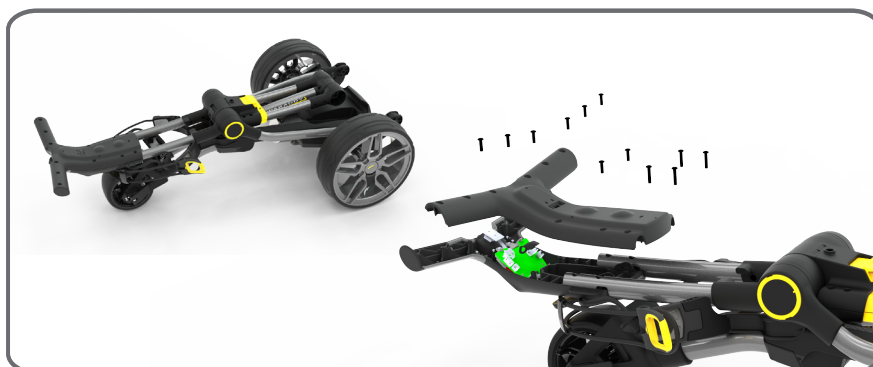
### Step 1

With the trolley in a fully open position, remove the cap on the middle joint using a flat headed screw driver or similar then undo the M8 nyloc nut securing the cam lock. Remove and place to one side.



### Step 2

Fold the trolley down into a semi closed position with only the front wheel assembly open. Remove the eight 4x14mm and 2x20mm pozi screws securing the handle. Unplug the handle wire and place to one side.



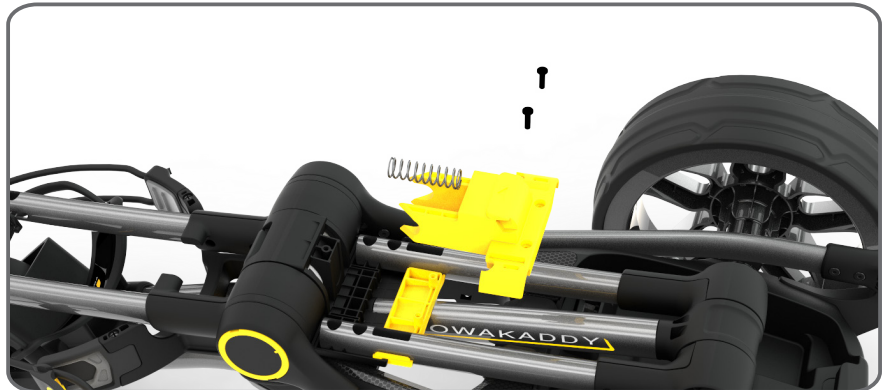
### Step 3

Remove the five 4x14 pozi screws securing the main hinge hub lower and place to one side.



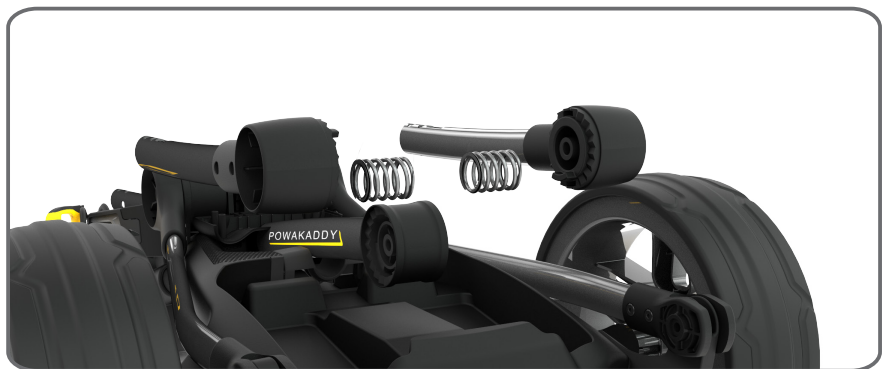
### Step 4

Remove the two 4x14 pozi screws securing the yellow button. Place all parts to one side.



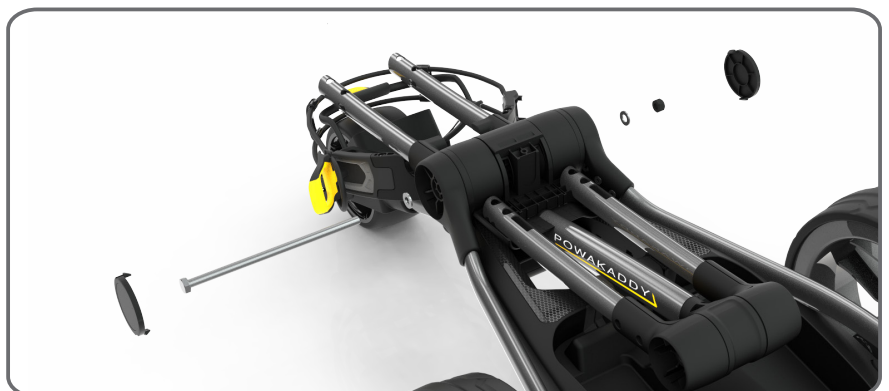
### Step 5

Now lift away the two middle tubes and springs from the cam lock joint. Place to one side.



### Step 6

Prise away the caps on the top joint using a flat head screwdriver or similar. Undo the M8x170mm hex bolt and remove. Place to one side with the two washers and M5 nyloc nut.



### Step 7

Release the upper joint by gently spreading the rear legs.



### Step 8

Lift away the middle joint leaving the upper bag stay in place. All the pieces will want to spring away but try to lay them in sequence for easier reassembly.

Note: The right tube will have the handle wire running through it.



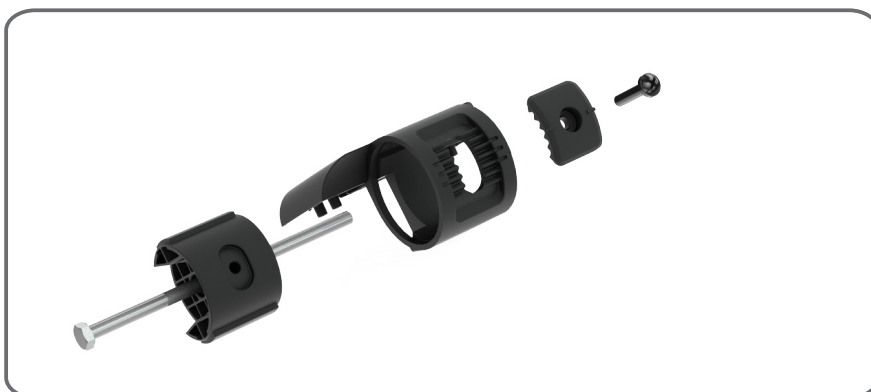
### Step 9

Take the upper hinge hub assembly and remove the adjustment plate screw. Push the adjustment lock out from the hub and catch the nyloc nut from inside.



### Step 10

Place the nyloc nut back into the adjustment lock and hold in place with the bolt or screwdriver. Push into the new hinge hub upper until centrally aligned. Secure using the adjustment plate and pozi screw.



### Step 12

Reassemble assembly into the frame. Press the upper tubes, outer locks, springs and hinge hub assembly together before sliding in between the upper bag stay. Refer to step 8. Align the rear legs with the bag stay and secure using the M8x170 hex bolt, M8 nyloc nut and washers. Tighten to 2.8Nm. Test the lock with the yellow button upper before replacing the end caps.



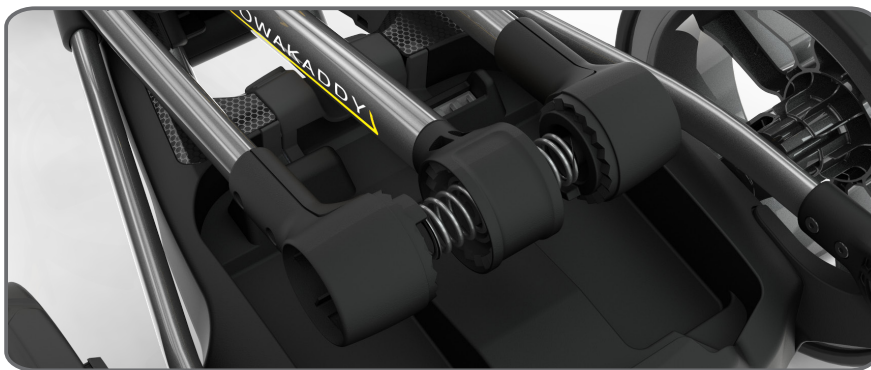
### Step 11

Take the lower tubes and remove the plastics. Assemble onto the new tubes provided. Ensure the tube orientation is correct as shown.



### Step 11

Place the tubes back into the assembly. Be sure to include the springs. Push the holes in the tubes over the bosses of the hinge hub lower to hold in place.



### Step 11

Slip the new yellow button upper under the tubes and the button lower on top. Ensure features are slotted into the tube recess. Ensure the spring is located into the round hole within the button and makes good contact with the upper joint. Secure with using the two 4x14mm pozi screws. Test the joint mechanism functions correctly before adding the hinge hub lower. Secure with another five 4x14mm pozi screws.



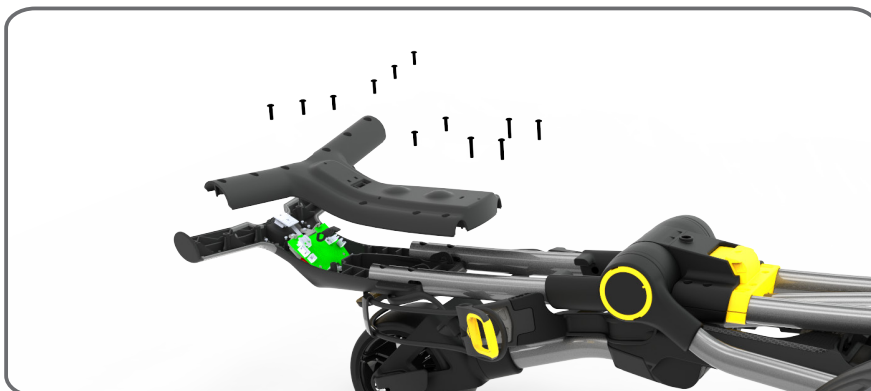
### Step 14

Carefully unfold the trolley into the fully open position. Reassemble the cam lock. Tighten to 1.8 Nm. Replace the cap.



### Step 14

Back in the half folded position, plug the handle wire back in and replace the handle. Ensure the handle wire and USB port cannot get snagged on the bosses. The four 4x20 pozi screws locate in the base of the handle. Tighten them and the other 4x14mm pozi screws the pozi screws to 1.5Nm.



- Place the trolley back onto the ground.
- Open and close trolley to test the top lock and cam lock. Adjust the torque settings if necessary.
- Insert the battery to power the trolley and test motor functions.

For more technical help visit [www.powakaddy.co.uk/support](http://www.powakaddy.co.uk/support)