

EBS Gearbox Replacement Instructions



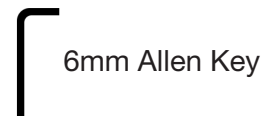
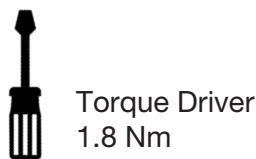
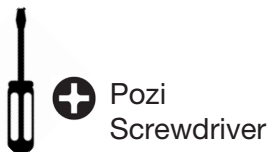
To replace the EBS gearbox is a simple process.
Please follow the following steps:

- Please ensure battery is disconnected from the trolley.
- Remove the two rear wheels and place onto a firm work surface with the bottom of the trolley facing upwards.

Your Kit contains:

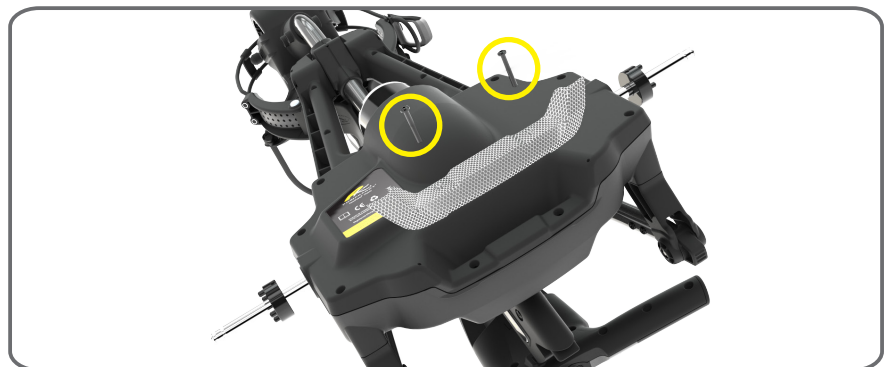
- 1 x New EBS Gearbox
- 1 x Motor Bracket Spacer
- 2 x Roll Pins
- 1 x Cable Tie
- 1 x Spare Screw Pack

Tools Required:



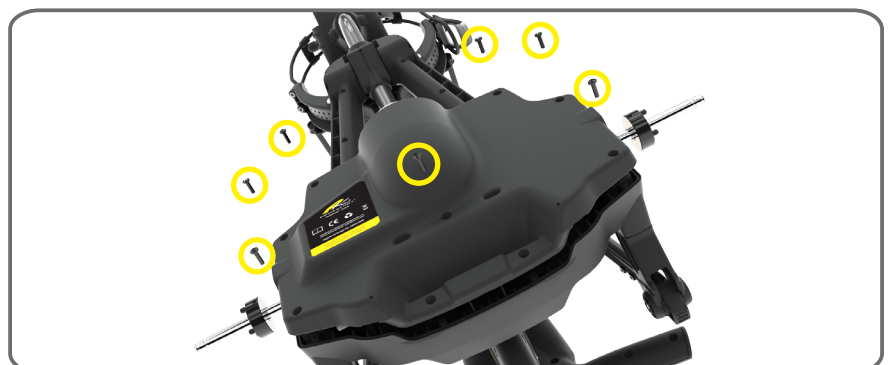
Step 1

Remove the two 4x30mm Pan Pozi screws and lift away the rear trim.



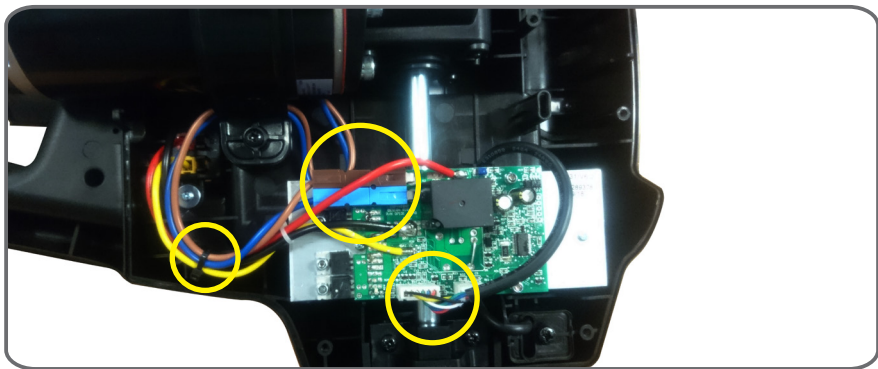
Step 2

Remove the remaining seven 4x14mm Pan Pozi screws securing the lower Powaframe. Place to one side and keep safe.



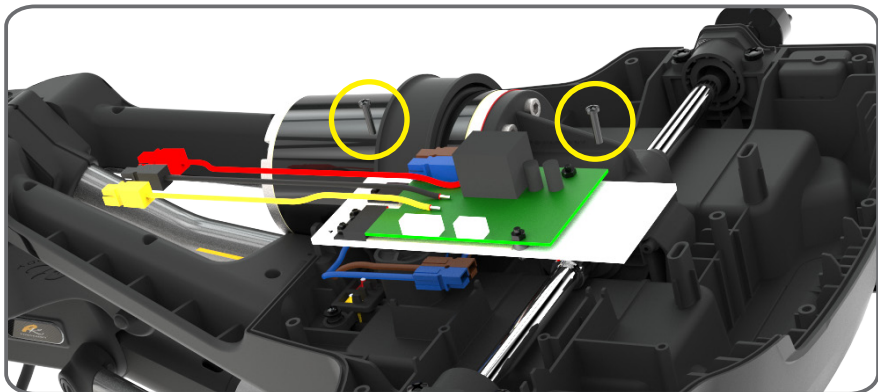
Step 3

Unplug the power cable running from the motor to the motor speed controller and then remove the handle wire. Cut and remove the cable tie. Be careful not to damage the wires.



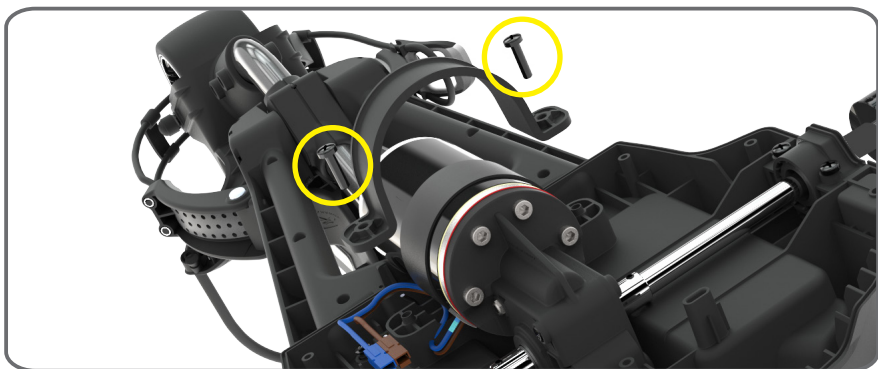
Step 4

Remove the two 3x14mm pozi screws from the motor speed controller and lift away (you can leave the three battery tray wires connected).



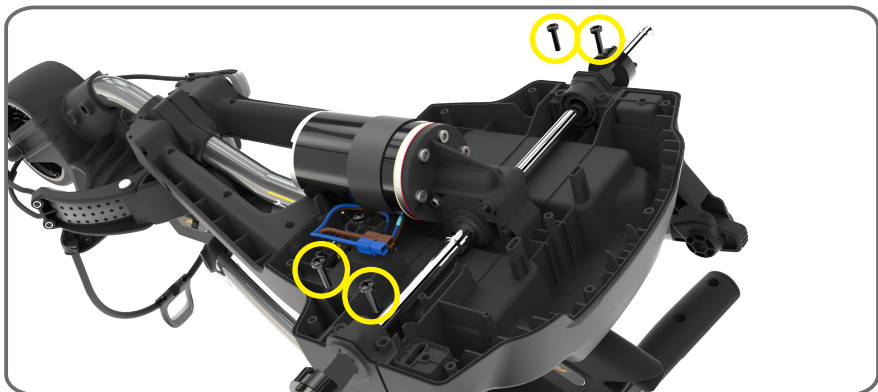
Step 5

Remove the two 5x20mm pozi screws and lift away the motor bracket.



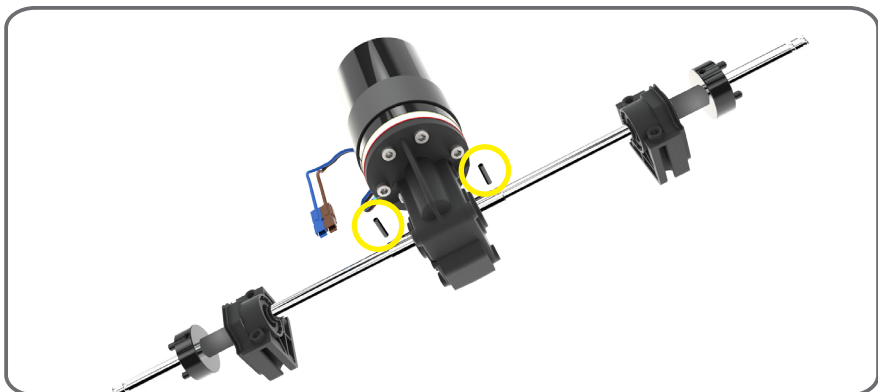
Step 6

Remove the four remaining 5x20mm pozi screws holding the bearing blocks then lift drive assembly away.



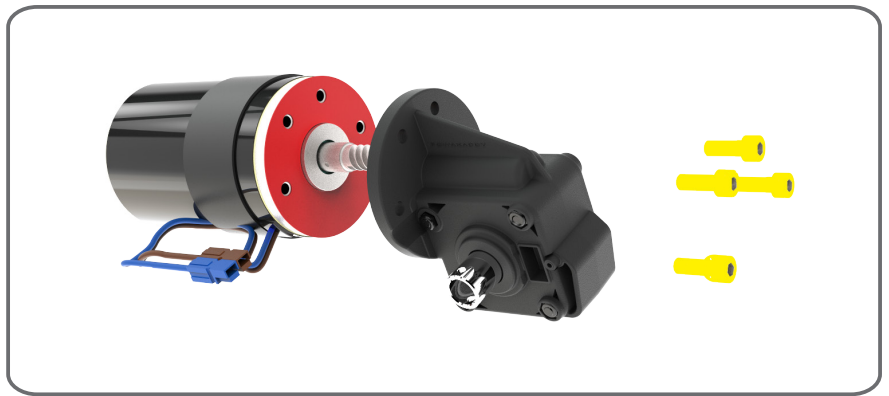
Step 7

With the drive assembly lying on a firm surface, rotate the axle's so the roll pin is facing upwards. Using a punch, remove the two roll pins. Remove the axles from the gearbox and place either side ready for reassembly.



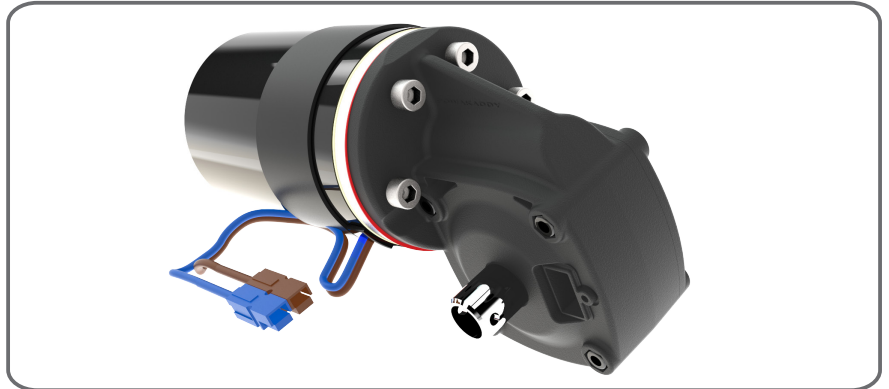
Step 8

Remove the M6x16 hex bolts and M6 washers from the motor and gearbox assembly. Carefully pull away the gearbox. Leave the gasket on the motor.



Step 9

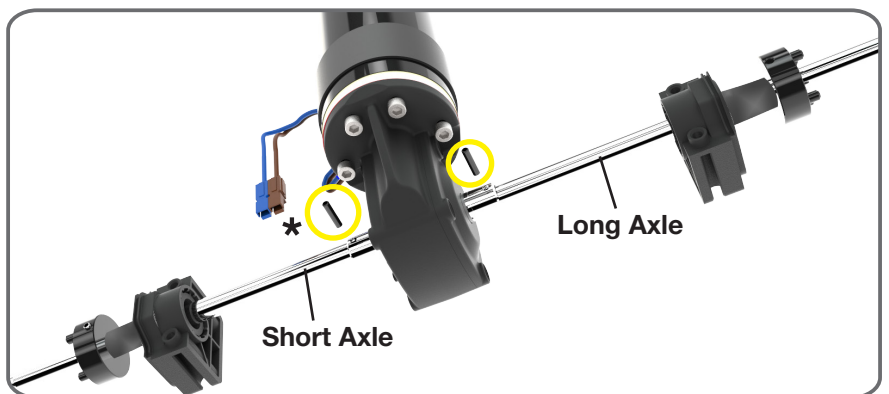
Mate the new gearbox to the motor with the gasket positioned inbetween. Use the M6x16 hex bolts and M6 washers. It is essential to hand tighten the hex bolts to avoid cross threading the features. Once correctly aligned, tighten the hex bolts to 5Nm.



Step 10

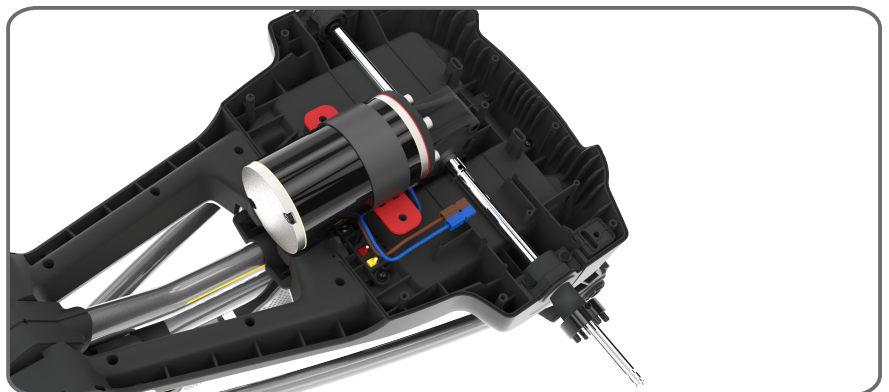
One at a time, slide the axles into the new gearbox and secure using the new supplied roll pins. Ensure the correct axles are inserted into the correct side. Ensure roll pins are inserted all the way so they cannot interfere with the Powaframe.

*Please use the new roll pins even if the old parts look in good working order.



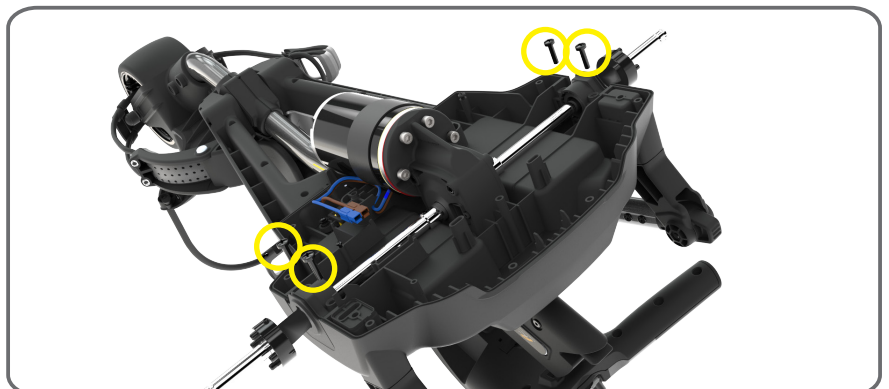
Step 11

Lift the motor and place the motor bracket spacer as shown (highlighted in red). The two arrows should point towards the front of the trolley.



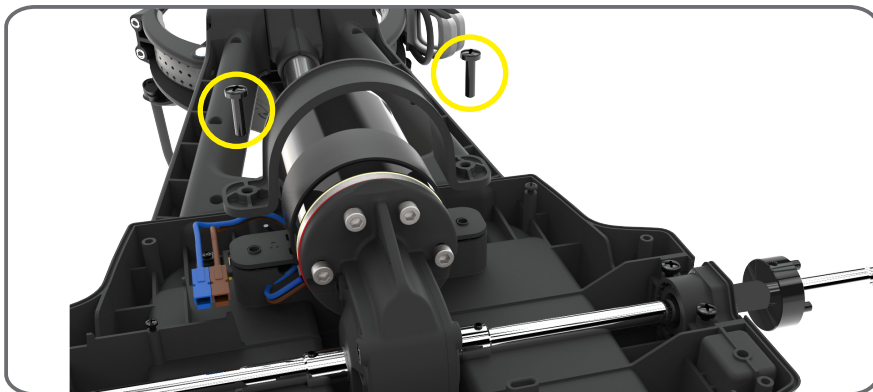
Step 12

With the new motor bracket spacer in place, first secure the drive assembly by replacing the four 5x20mm bearing block screws. Tighten to 1.5Nm



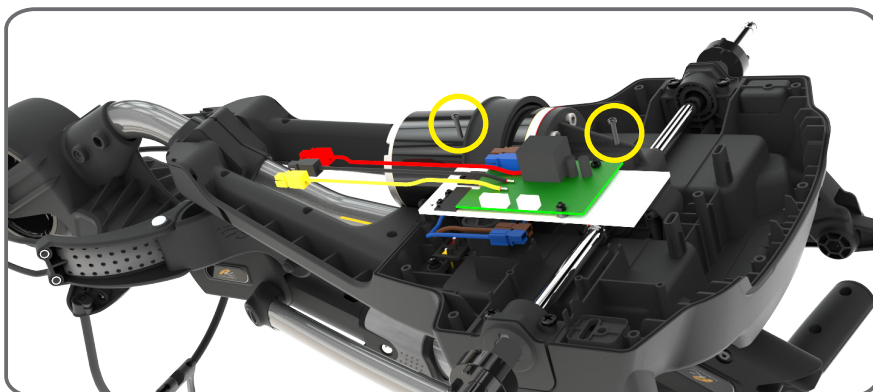
Step 13

Place the motor bracket on top of the motor, aligning with the boss features. Position the cable between the motor and bracket. Secure using the remaining two 5x20mm screws. Tighten to 1.5Nm



Step 14

Reverse steps 4 to 1; attach motor speed controller, plug in motor cables and handle wire. Cable tie together then trim the excess. Finally replace lower Powafraframe and rear trim.



- Place the trolley back onto the ground and reattach the rear wheels.
- Insert the battery to power the trolley and test motor functions.

For more technical help visit www.powakaddy.co.uk/support